



# Impact Fee Study Overview

**Douglas County  
Board of Commissioners  
Work Session**

1.6.25

# Purpose:

## Impact Fee Study

- Address the potential to collect **impact fees** from new development to help pay for additional public facilities needed to serve future growth & development
- GA **D**evelopment **I**mpact **F**ee **A**ct = can't charge more than the fair, proportionate share of the cost of public facilities

# Scope:

## Impact Fee Study

- **Parks**, open space, and recreation
- **Library** services
- **Public safety** including Sheriff/Jail, Fire/EMS, E911, EMA & Animal Control
- **Roads**, streets, and bridges

# Scope:

# Impact Fee Study

## ADDITIONAL:

**Park acreage**

**Recreation components**

**Library collections**

**Building area (sq.ft.)**

**Communication towers**

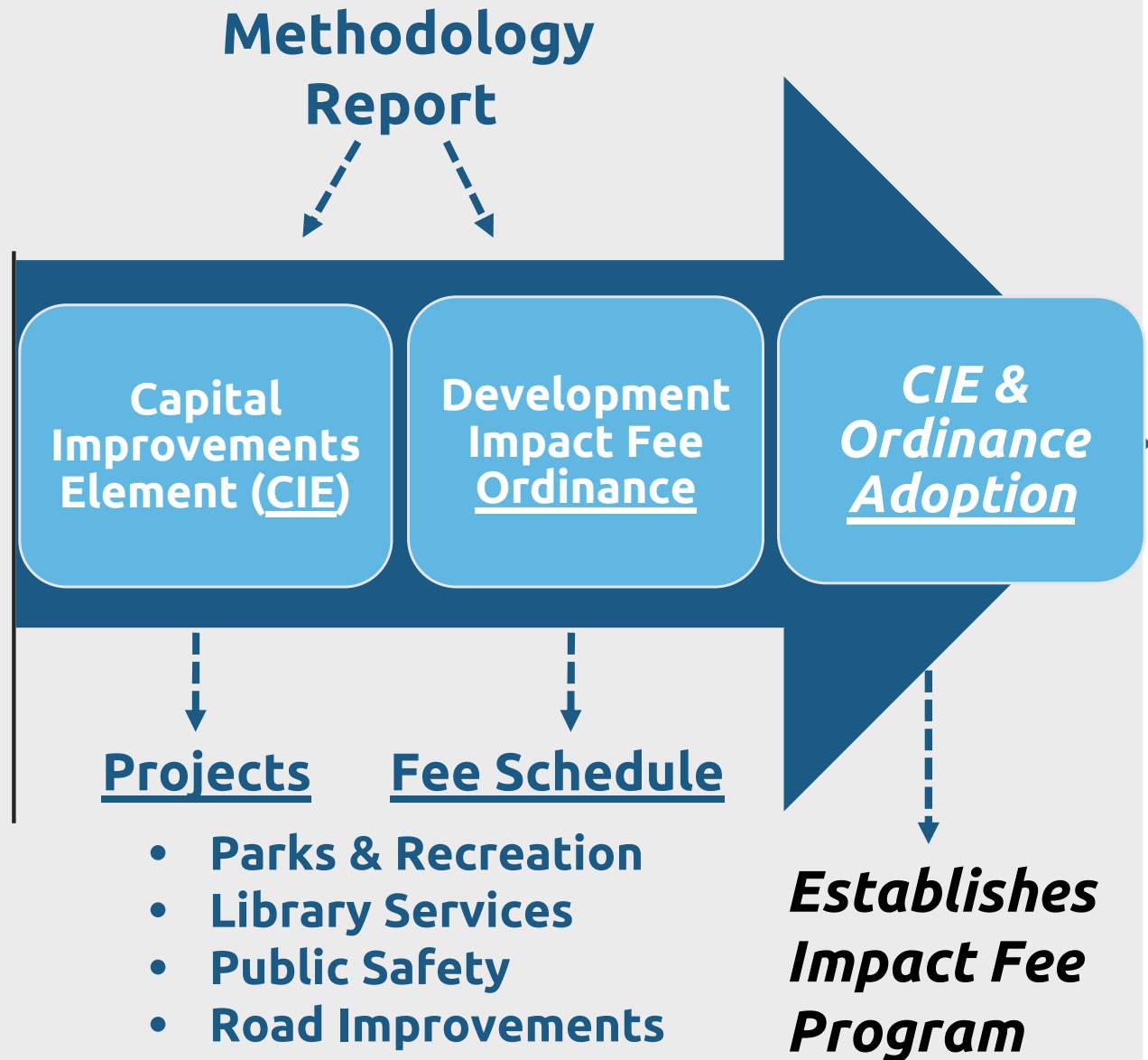
**Heavy vehicles**

**Road projects**  
(capacity-adding)

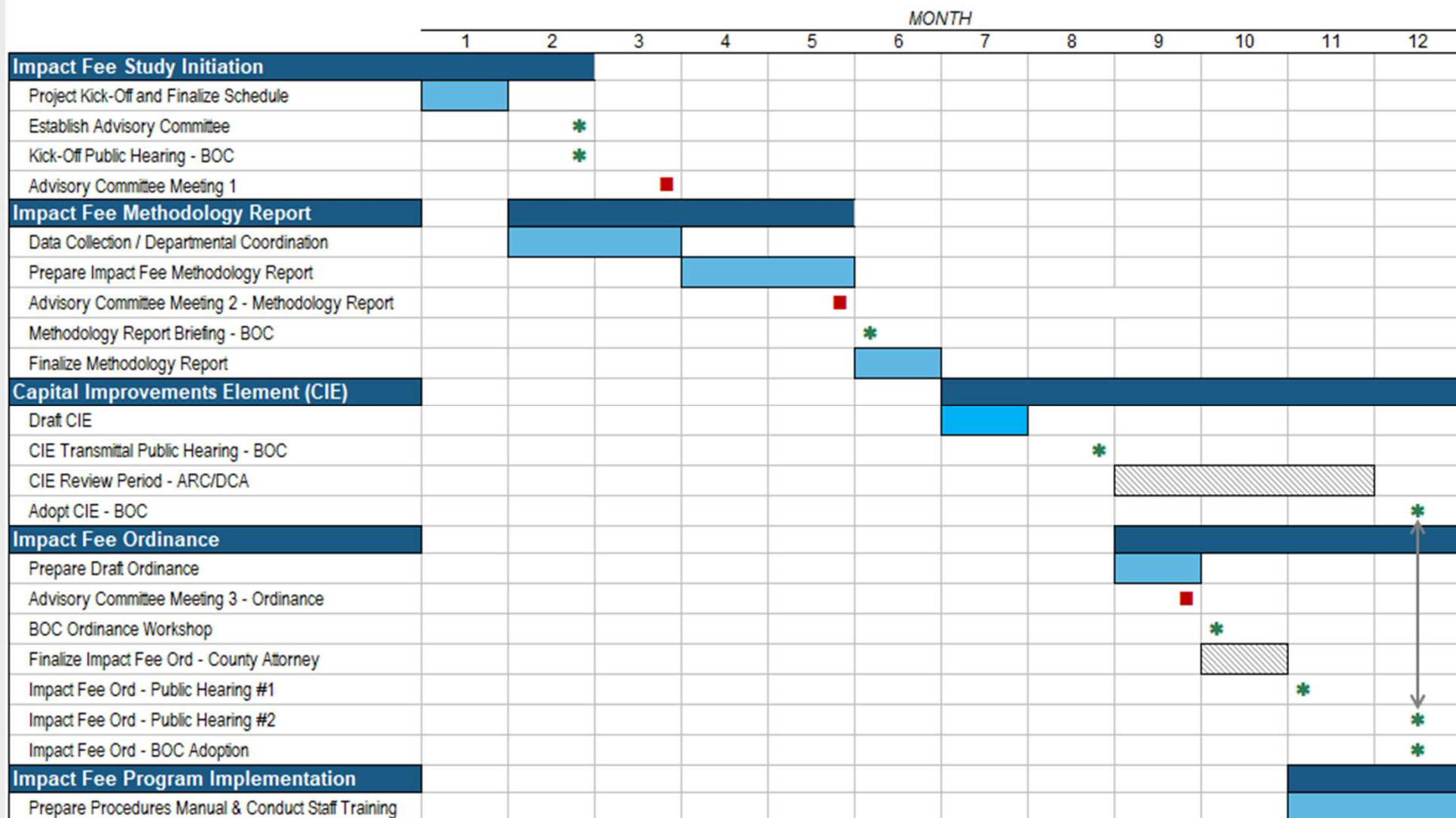


# Process:

## Impact Fee Study



## Target Schedule of Key Events Douglas County Impact Fee Program



Advisory Committee Meeting

Board of Commissioners (BOC) Meeting or Workshop

Consultant Activity



# Impact Fee Study Overview

**QUESTIONS?**

1.6.25