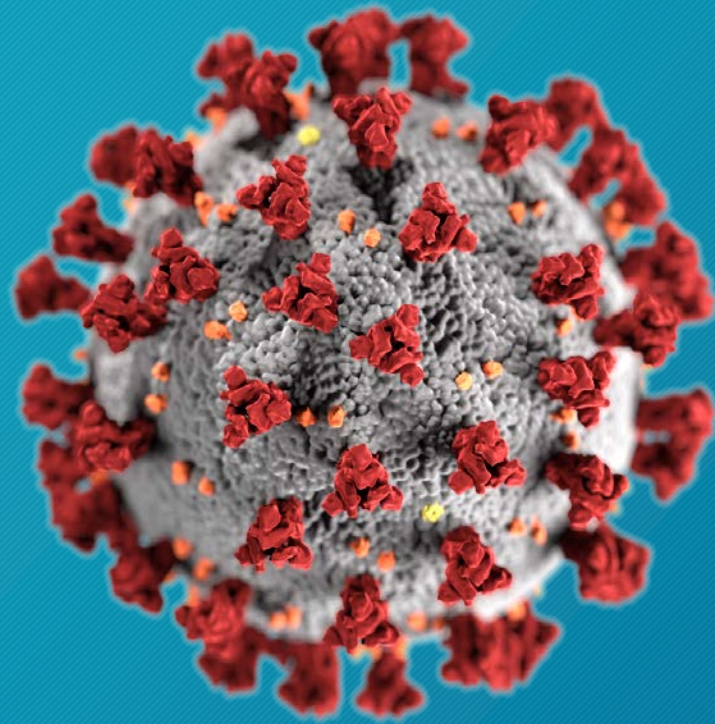


STATE OF THE COUNTY **2021**



COVID-19



575,000 Lives Lost in the U.S.

200+ in DOUGLAS COUNTY

COVID-19 Response



Coronavirus Response Douglas County

Douglas County COVID-19 Hub



County Chairman Dr. Romona Jackson-Jones

Message from the Chairman regarding COVID-19 coronavirus

Message

Coronavirus Disease (COVID-19) is a respiratory illness that can spread from person to person. The virus that causes COVID-19 is a novel coronavirus that was first identified during an investigation into an outbreak in Wuhan, China. The Georgia Department of Public Health (DPH), in consultation with the CDC, is evaluating patient information received from healthcare providers about potential cases of coronavirus in Georgia.

Douglas County Confirmed Cases

14,569

Douglas County Confirmed Deaths

207

Source: Updates from CDC

Covid-19 Information Website

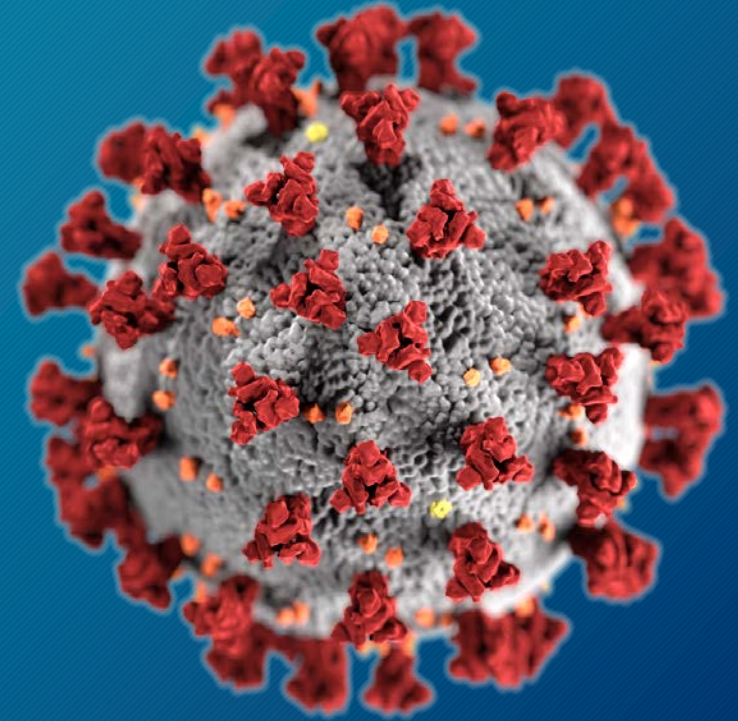


Various Safety Campaigns

COVID-19



\$1.5 million in relief funding
\$1.7 million in assistance/grants



Special Thanks



Kelly G. Robinson
*Vice Chairman
District 2 Commissioner*



Henry Mitchell, III
District 1 Commissioner



Tarenia Carthan
District 3 Commissioner

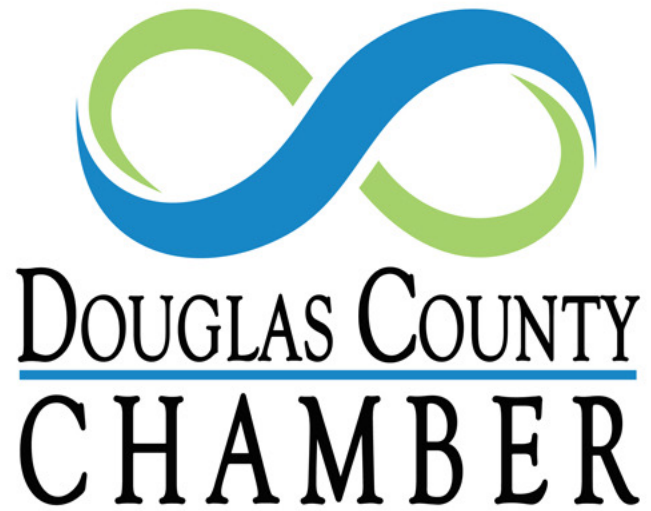


Ann Jones Guider
District 4 Commissioner

STATE OF THE COUNTY **2021**



Small Business



COVID-19 Relief



\$28 million

in emergency relief fund



Douglas County



Population
150,000



Count
100%

Douglas County



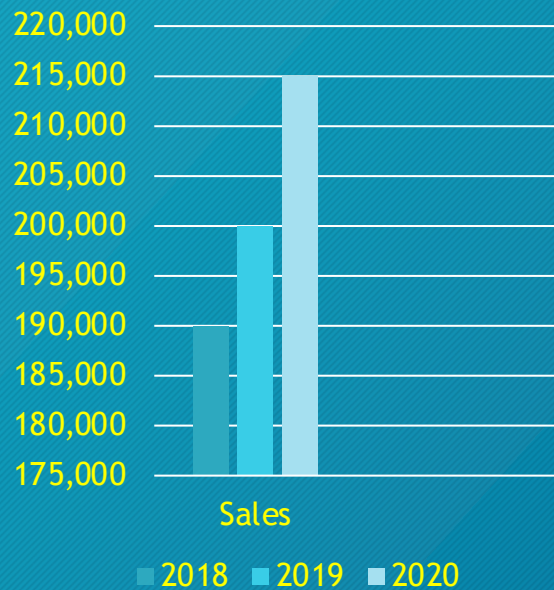
MOODY's

Credit Rating
Aa2

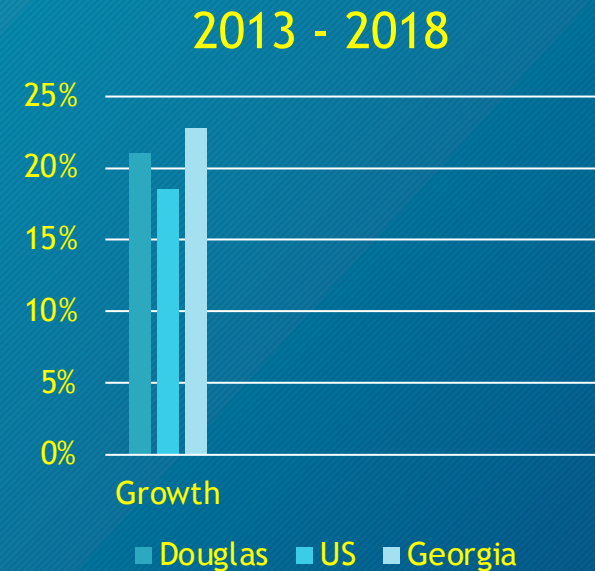


Reserve Funds
Healthy

Housing Market



Home Sales
Up 7%



Percentage Growth
Outpacing U.S.

Economic Growth



Economic Growth

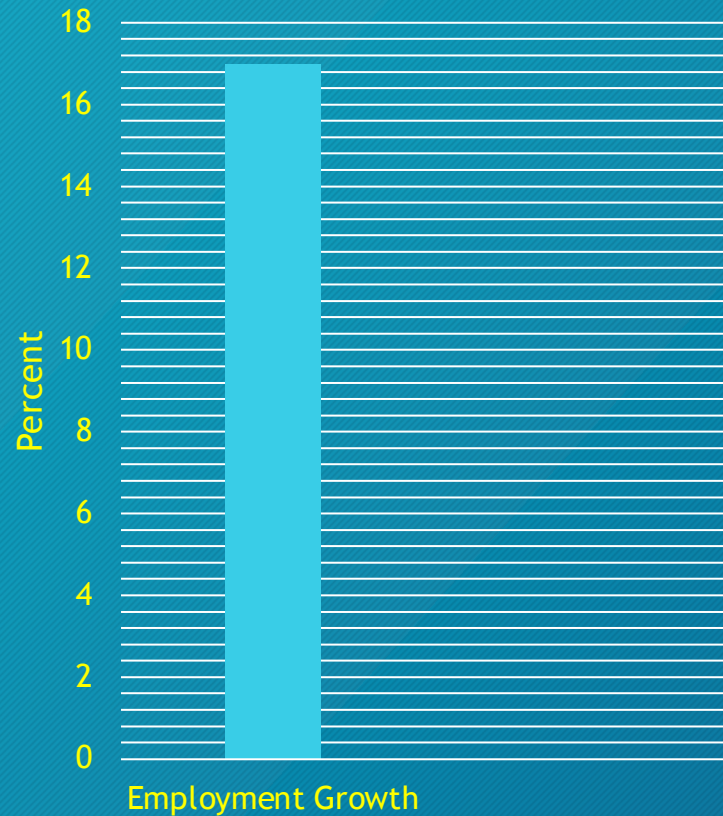


Research/Development
205%

Software/IT
297%

Transportation/Logistics
205%

Employment Growth



2014 - 2019
Employment Growth
Up 17%

Public Safety



Public Safety

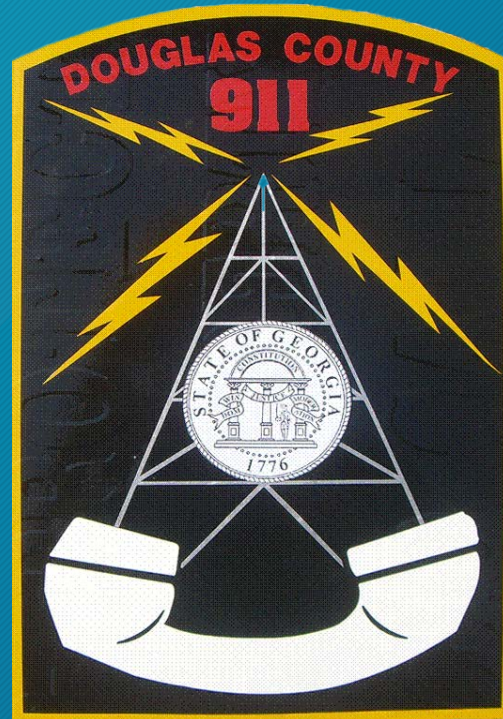


Public Safety



PREPAREDNESS • RESPONSE • RECOVERY • MITIGATION

Public Safety



Communications



Legislation



EXTERNAL AFFAIRS

Utilities



WATER. ENVIRONMENT. COMMUNITY.

WWW.DDCWSA.COM

Utilities



GREYSTONE
POWER CORPORATION
An Electric Membership Corporation



Georgia Power

Healthcare



**COBB & DOUGLAS
PUBLIC HEALTH**

Healthier lives. Healthier community.

Healthcare

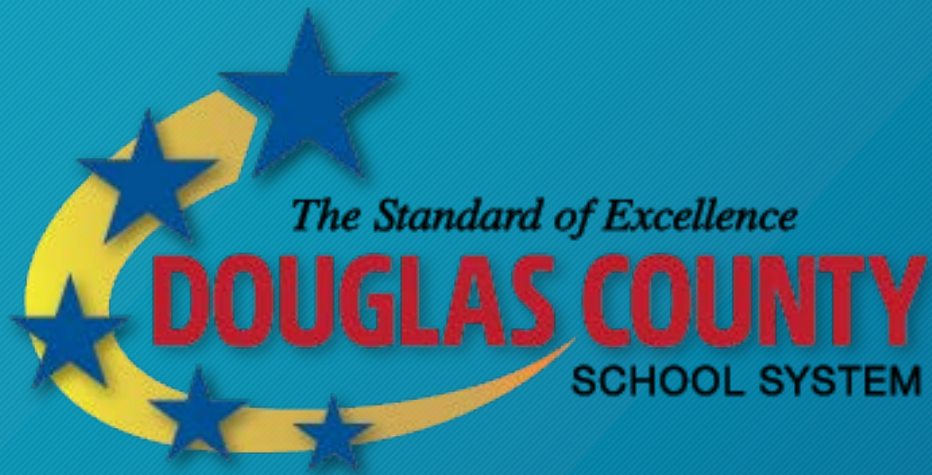


Douglas County CSB

Healthcare



Education



89.4% Graduation Rate

83.8% Georgia Rate

Education



Education



Education



Multipurpose Indoor Arena for Ceremonies/Events

Since 2017...



\$4.8 Billion in Capital Investments

2000+ New Jobs

\$65k Average Salary

56% Greater than County Average Salaries

Economic Engine



Comptree Inc.



Economic Engine



STITCH FIX

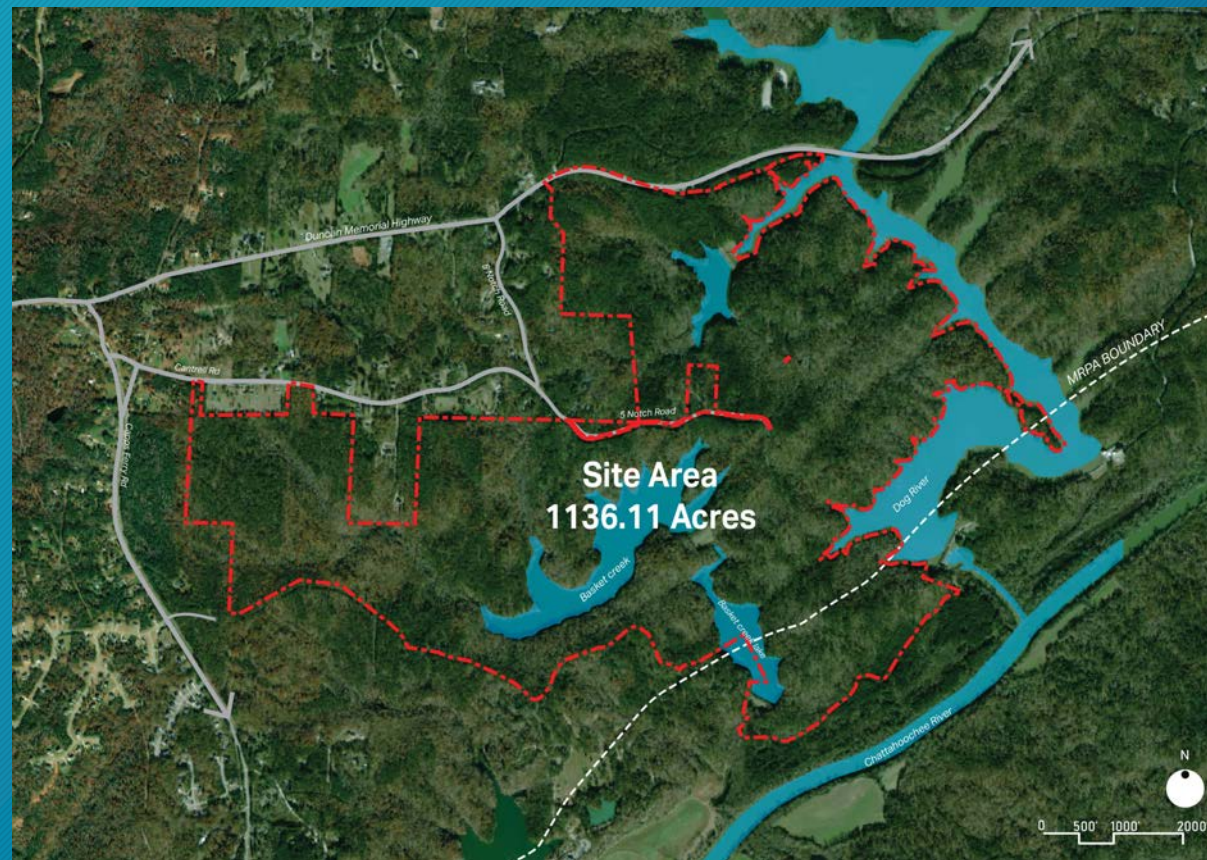
589 Employees, Goal of 981



switch

Largest Capital Investment in Georgia

Progress



Progress



Progress



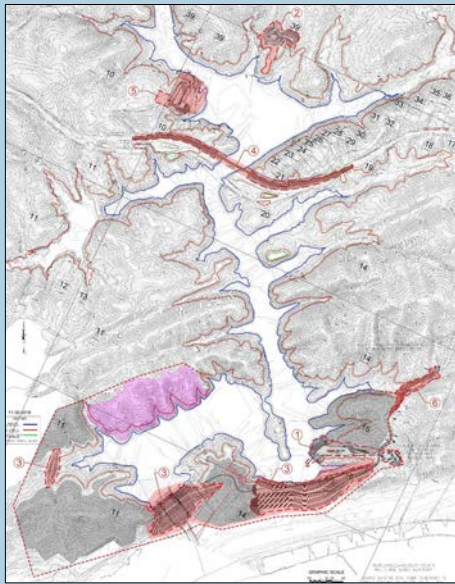
Progress



Progress



Progress



PROJECTS ASSOCIATED WITH RESERVOIR EXPANSION

1. Primary Intake
2. Secondary Intake
3. Primary Dam, Saddle Dam, and Saddle Dike
4. Hwy 166 Bridge
5. Recreation Complex
6. Entrance Road

Reservoir Expansion



Pediatric Emergency Room

Progress



Driver Services Center
in Douglas County



Tax Allocation District
Unincorporated Douglas County in 2020

SPLOST



SPLOST



SPLOST



STATE OF THE COUNTY **2021**



Planning & Zoning



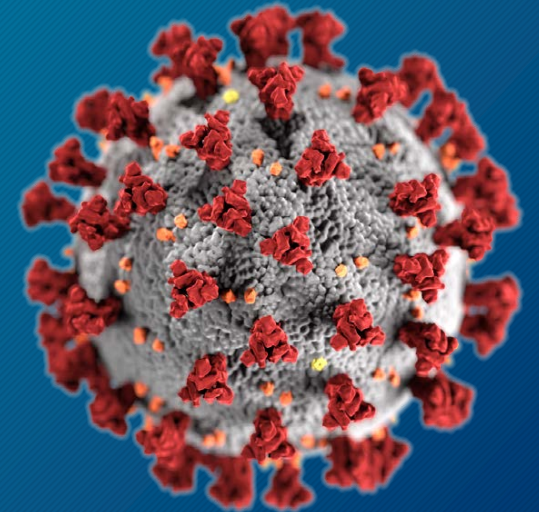
Vaccination Sites



Priority Plan



- Step 1** Sufficient COVID-19 Vaccines
- Step 2** Secure Transportation Funding
- Step 3** Increase Services for Veterans
- Step 4** 5 Year Strategic Plan



Future



“For while we have our eyes on the future, history has its eyes on us. This is the era of just redemption, we feared at its inception. We did not feel prepared to be the heirs of such a terrifying hour, but within it we found the power to author a new chapter, to offer hope and laughter to ourselves. So while once we asked, ‘How could we possibly prevail over catastrophe?’ Now we assert, ‘How could catastrophe prevail over us?’ We will not march back to what was... but move to what shall be. A country that is bruised but whole, benevolent but bold...”

-Amanda Gorman
National Youth Poet Laureate

STATE OF THE COUNTY **2021**

